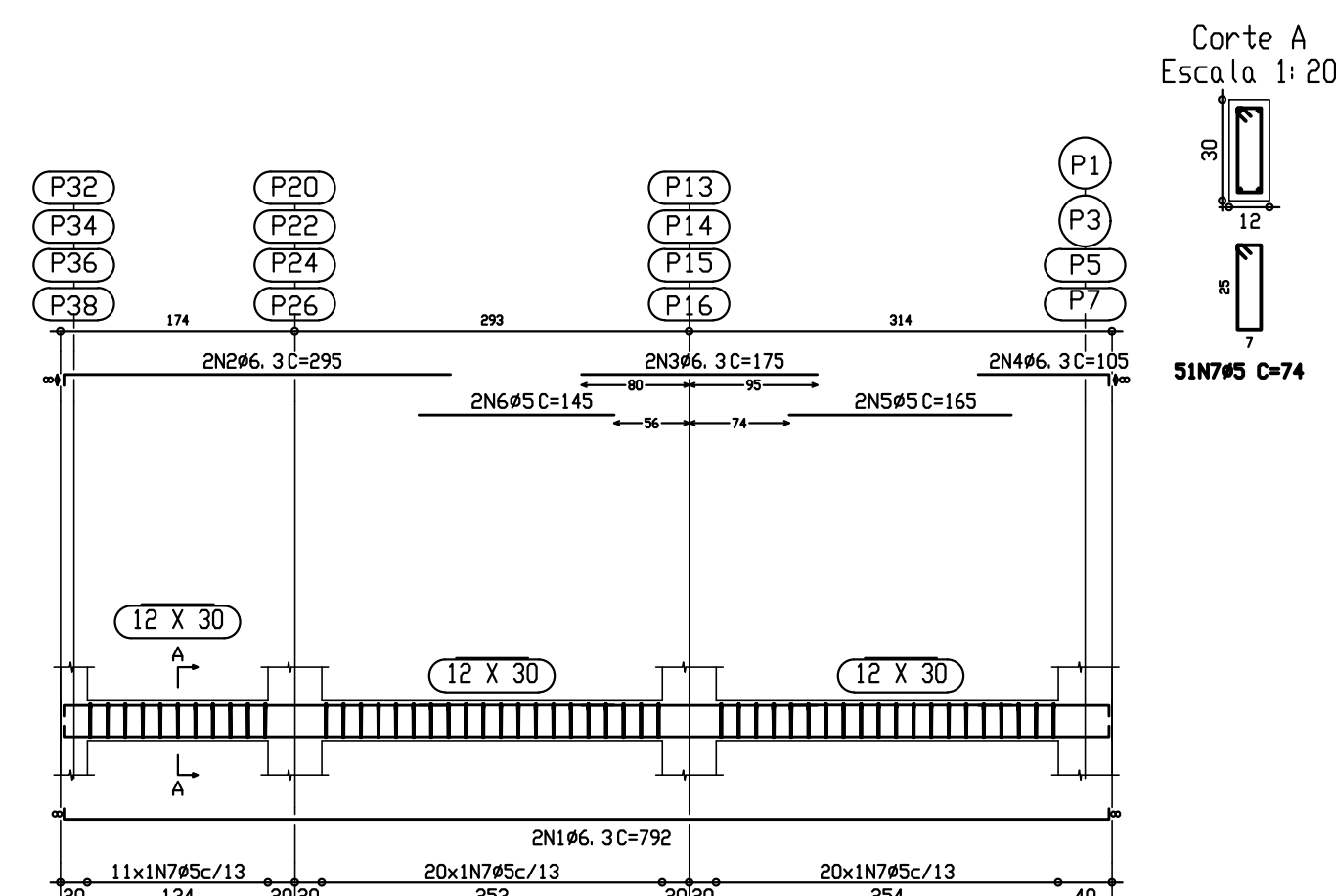
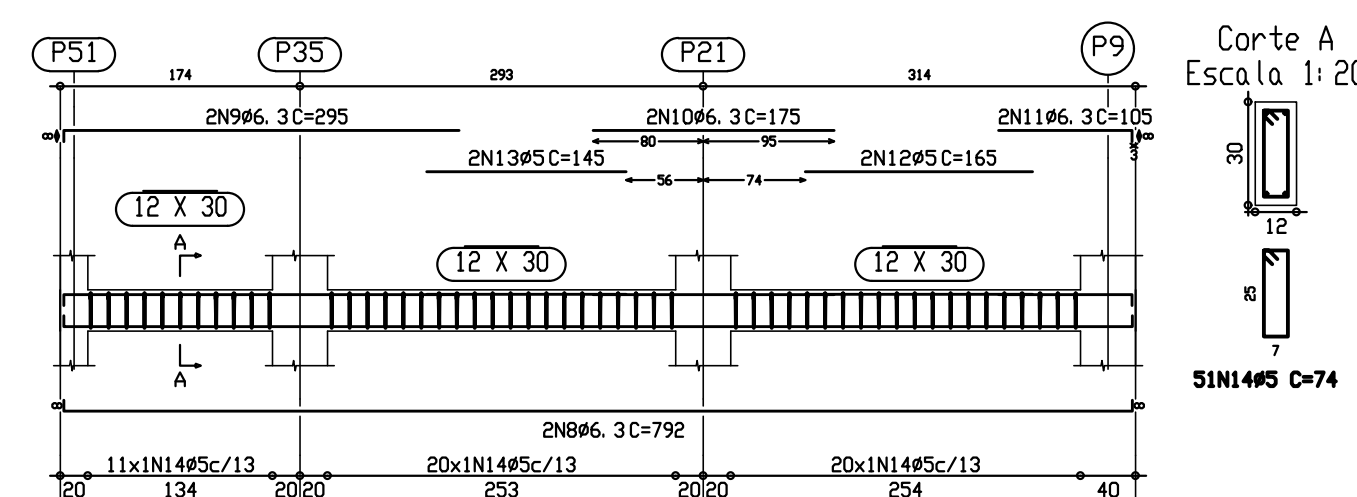


Pórtico 7
Pórtico 9
Pórtico 11
Pórtico 13
Escala 1:50

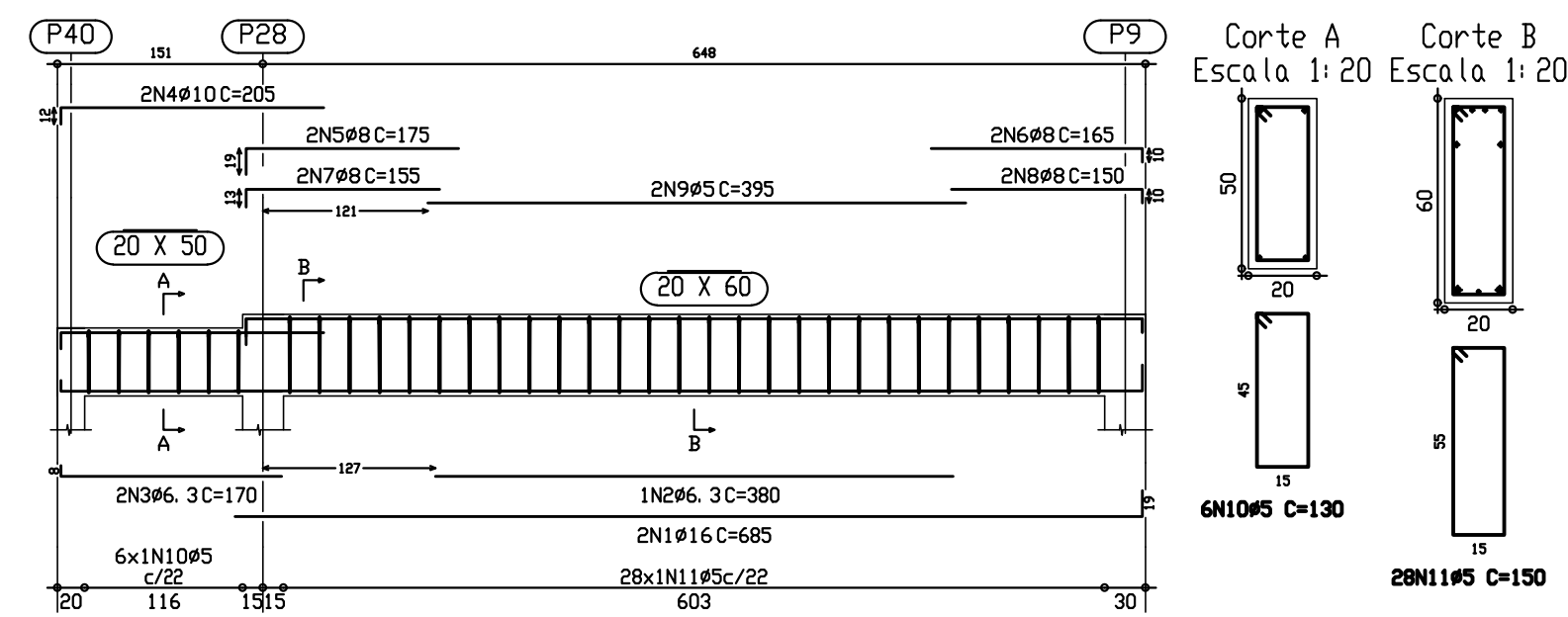


Pórtico 14
Escala 1:50

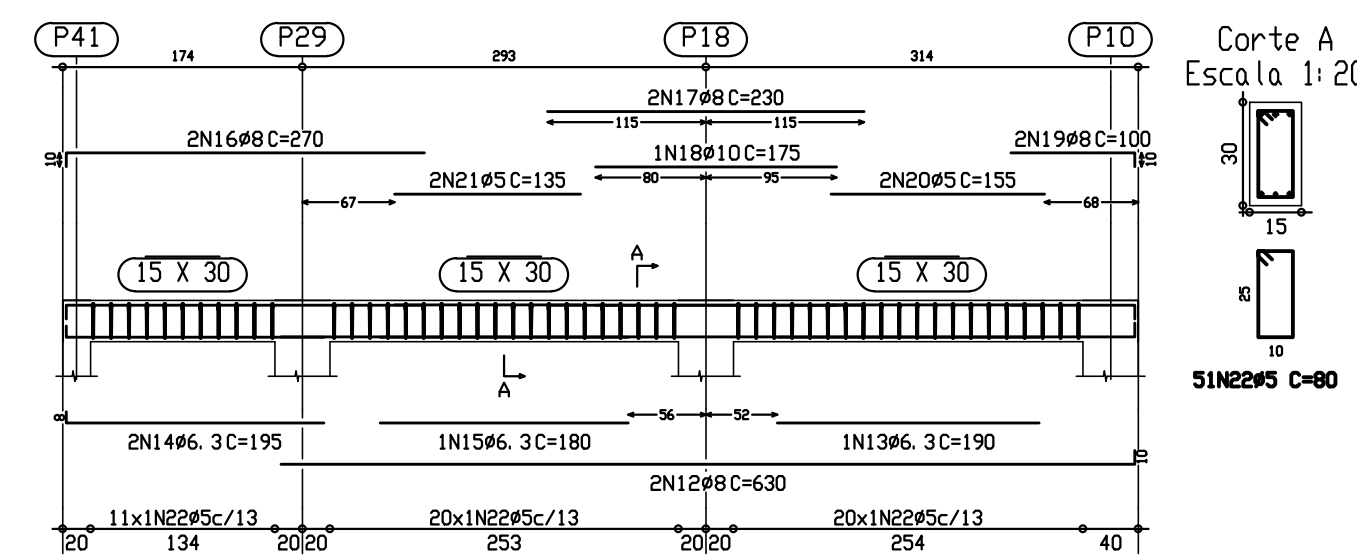


E elemento	Pos	Dian	Q	Pat (cm)	Rectal Pat (cm)	Comp. (cm)	Total (cm)	CA-50A (Kg)	CA-60 (Kg)
Part 7 Part 9 Part 10 (40/10)	# 3	0	0	776	8	792	1584	0.9	
	# 3	0	0	776	8	792	1584	0.9	
	# 3	0	0	776	8	792	1584	0.9	
	# 3	0	0	776	8	792	1584	0.9	
	# 3	0	0	776	8	792	1584	0.9	
	# 3	0	0	776	8	792	1584	0.9	
	# 3	0	0	776	8	792	1584	0.9	
Part 9	# 6	3	0	776	8	792	1584	0.9	
	# 6	3	0	776	8	792	1584	0.9	
	# 6	3	0	776	8	792	1584	0.9	
	# 6	3	0	776	8	792	1584	0.9	
	# 6	3	0	776	8	792	1584	0.9	
	# 6	3	0	776	8	792	1584	0.9	
	# 6	3	0	776	8	792	1584	0.9	
							Total	7.5	
							140	30.0	
							Total	7.5	30.4
Part 9	# 6	3	0	776	8	792	1584	0.9	
	# 6	3	0	776	8	792	1584	0.9	
	# 6	3	0	776	8	792	1584	0.9	
	# 6	3	0	776	8	792	1584	0.9	
	# 6	3	0	776	8	792	1584	0.9	
	# 6	3	0	776	8	792	1584	0.9	
	# 6	3	0	776	8	792	1584	0.9	
							Total	7.5	
							140	30.0	
							Total	7.5	30.4
Part 9	# 6	3	0	776	8	792	1584	0.9	
	# 6	3	0	776	8	792	1584	0.9	
	# 6	3	0	776	8	792	1584	0.9	
	# 6	3	0	776	8	792	1584	0.9	
	# 6	3	0	776	8	792	1584	0.9	
	# 6	3	0	776	8	792	1584	0.9	
	# 6	3	0	776	8	792	1584	0.9	
							Total	7.5	
							140	30.0	
							Total	7.5	30.4
Part 9	# 6	3	0	776	8	792	1584	0.9	
	# 6	3	0	776	8	792	1584	0.9	
	# 6	3	0	776	8	792	1584	0.9	
	# 6	3	0	776	8	792	1584	0.9	
	# 6	3	0	776	8	792	1584	0.9	
	# 6	3	0	776	8	792	1584	0.9	
	# 6	3	0	776	8	792	1584	0.9	
							Total	7.5	
							140	30.0	
							Total	7.5	30.4
Part 9	# 6	3	0	776	8	792	1584	0.9	
	# 6	3	0	776	8	792	1584	0.9	
	# 6	3	0	776	8	792	1584	0.9	
	# 6	3	0	776	8	792	1584	0.9	
	# 6	3	0	776	8	792	1584	0.9	
	# 6	3	0	776	8	792	1584	0.9	
	# 6	3	0	776	8	792	1584	0.9	
							Total	7.5	
							140	30.0	
							Total	7.5	30.4
Part 9	# 6	3	0	776	8	792	1584	0.9	
	# 6	3	0	776	8	792	1584	0.9	
	# 6	3	0	776	8	792	1584	0.9	
	# 6	3	0	776	8	792	1584	0.9	
	# 6	3	0	776	8	792	1584	0.9	
	# 6	3	0	776	8	792	1584	0.9	
	# 6	3	0	776	8	792	1584	0.9	
							Total	7.5	
							140	30.0	
							Total	7.5	30.4
Part 9	# 6	3	0	776	8	792	1584	0.9	
	# 6	3	0	776	8	792	1584	0.9	
	# 6	3	0	776	8	792	1584	0.9	
	# 6	3	0	776	8	792	1584	0.9	
	# 6	3	0	776	8	792	1584	0.9	
	# 6	3	0	776	8	792	1584	0.9	
	# 6	3	0	776	8	792	1584	0.9	
							Total	7.5	
							140	30.0	
							Total	7.5	30.4
Part 9	# 6	3	0	776	8	792	1584	0.9	
	# 6	3	0	776	8	792	1584	0.9	
	# 6	3	0	776	8	792	1584	0.9	
	# 6	3	0	776	8	792	1584	0.9	
	# 6	3	0	776	8	792	1584	0.9	
	# 6	3	0	776	8	792	1584	0.9	
	# 6	3	0	776	8	792	1584	0.9	
							Total	7.5	
							140	30.0	
							Total	7.5	30.4
Part 9	# 6	3	0	776	8	792	1584	0.9	
	# 6	3	0	776	8	792	1584	0.9	
	# 6	3	0	776	8	792	1584	0.9	
	# 6	3	0	776	8	792	1584	0.9	
	# 6	3	0	776	8	792	1584	0.9	
	# 6	3	0	776	8	792	1584	0.9	
	# 6	3	0	776	8	792	1584	0.9	
							Total	7.5	
							140	30.0	
							Total	7.5	30.4
Part 9	# 6	3	0	776	8	792	1584	0.9	
	# 6	3	0	776	8	792	1584	0.9	
	# 6	3	0	776	8	792	1584	0.9	
	# 6	3	0	776	8	792	1584	0.9	
	# 6	3	0	776	8	792	1584	0.9	
	# 6	3	0	776	8	792	1584	0.9	
	# 6	3	0	776	8	792	1584	0.9	
							Total	7.5	
							140	30.0	
							Total	7.5	30.4
Part 9	# 6	3	0	776	8	792	1584	0.9	
	# 6	3	0	776	8	792	1584	0.9	
	# 6	3	0	776	8	792	1584	0.9	
	# 6	3	0	776	8	792	1584	0.9	
	# 6	3	0	776	8	792	1584	0.9	
	# 6	3	0	776	8	792	1584	0.9	
	# 6	3	0	776	8	792	1584	0.9	
							Total	7.5	
							140	30.0	
							Total	7.5	30.4
Part 9	# 6	3	0	776	8	792	1584	0.9	
	# 6	3	0	776	8	792	1584	0.9	
	# 6	3	0	776	8	792	1584	0.9	
	# 6	3	0	776	8	792	1584	0.9	
	# 6	3	0	776	8	792	1584	0.9	
	# 6	3	0	776	8	792	1584	0.9	
	# 6	3	0	776	8	792	1584	0.9	
							Total	7.5	
							140	30.0	
							Total	7.5	30.4
Part 9	# 6	3	0	776	8	792	1584	0.9	
	# 6	3	0	776	8	792	1584	0.9	
	# 6	3	0	776	8	792	1584	0.9	
	# 6	3	0	776	8	792	1584	0.9	
	# 6	3	0	776	8	792	1584	0.9	
	# 6	3	0	776	8	792	1584	0.9	
	# 6	3	0	776	8	792	1584	0.9	
							Total	7.5	
							140	30.0	
							Total	7.5	30.4
Part 9	# 6	3	0	776	8	792	1584	0.9	
	# 6	3	0	776	8	792	1584	0.9	
	# 6	3	0	776	8	792	1584	0.9	
	# 6	3	0	776	8	792	1584	0.9	
	# 6	3	0	776	8	792	1584	0.9	
	# 6	3	0	776	8	792	1584	0.9	
	# 6	3	0	776	8	792	1584	0.9	
							Total	7.5	
							140	30.0	
							Total	7.5	30.4
Part 9	# 6	3	0	776	8	792	1584	0.9	
	# 6	3	0	776	8	792	1584	0.9	
	# 6	3	0	776	8	792	1584	0.9	
	# 6	3	0	776	8	792	1584	0.9	
	# 6	3	0	776	8	792	1584	0.9	
	# 6	3	0	776	8	792	1584	0.9	
	# 6	3	0	776	8	792	1584	0.9	
							Total	7.5	
							140	30.0	
							Total	7.5	30.4
Part 9	# 6	3	0	776	8	792	1584	0.9	
	# 6	3	0	776	8	792	1584	0.9	
	# 6	3	0	776	8	792	1584	0.9	
	# 6	3	0	776	8	792	1584	0.9	
	# 6	3	0	776	8	792	1584	0.9	
	# 6	3	0	776	8	792	1584	0.9	
	# 6	3	0	776	8	792	1584	0.9	
							Total	7.5	
							140	30.0	
							Total	7.5	30.4
Part 9	# 6	3	0	776	8	792	1584	0.9	
	# 6	3	0	776	8	792	1584	0.9	
	# 6	3	0	776	8	792	1584	0.9	
	# 6	3	0	776	8	792	1584	0.9	
	# 6	3	0	776	8	792	1584	0.9	
	# 6	3	0	776	8	792	1584	0.9	
	# 6	3	0	776	8	792	1584	0.9	
							Total	7.5	
							140	30.0	
							Total	7.5	30.4
Part 9	# 6	3	0	776	8	792	1584	0.9	
	# 6	3	0	776	8	792	1584	0.9	
	# 6	3	0	776	8	792	1584	0.9	
	# 6	3	0	776	8	792	1584	0.9	
	# 6	3	0	776	8	792	1584	0.9	
	# 6	3	0	776	8	792	1584	0.9	
	# 6	3	0	776	8	792	1584	0.9	
							Total	7.5	
							140	30.0	
							Total	7.5	30.4
Part 9	# 6	3	0	776	8	792	1584	0.9	
	# 6	3	0	776	8	792	1584	0.9	
	# 6	3	0	776	8	792	1584	0.9	
	# 6	3	0	776	8	792	1584	0.9	
	# 6	3	0	776	8	792	1584	0.9	
	# 6	3	0	776	8	792	1584	0.9	
	# 6	3	0	776	8	792	1584	0.9	
							Total	7.5	
							140	30.0	
							Total	7.5	30.4
Part 9	# 6	3	0	776	8	792	1584	0.9	
	# 6	3	0	776	8	792	1584	0.9	
	# 6	3	0	776	8	792	1584	0.9	
	# 6	3	0	776	8	792	1584	0.9	
	# 6	3	0	776	8	792	1584	0.9	
	# 6	3	0	776	8	792	1584	0.9	
	# 6	3	0	776	8	792	1584	0.9	
							Total	7.5	
							140	30.0	
							Total	7.5	30.4
Part 9	# 6	3	0	776	8	792	1584	0.9	
	# 6	3	0	776	8	792	1584	0.9	
	# 6	3	0	776	8	792	1584	0.9	
	# 6	3	0	776	8	7			

Pórtico 15
Escala 1:50



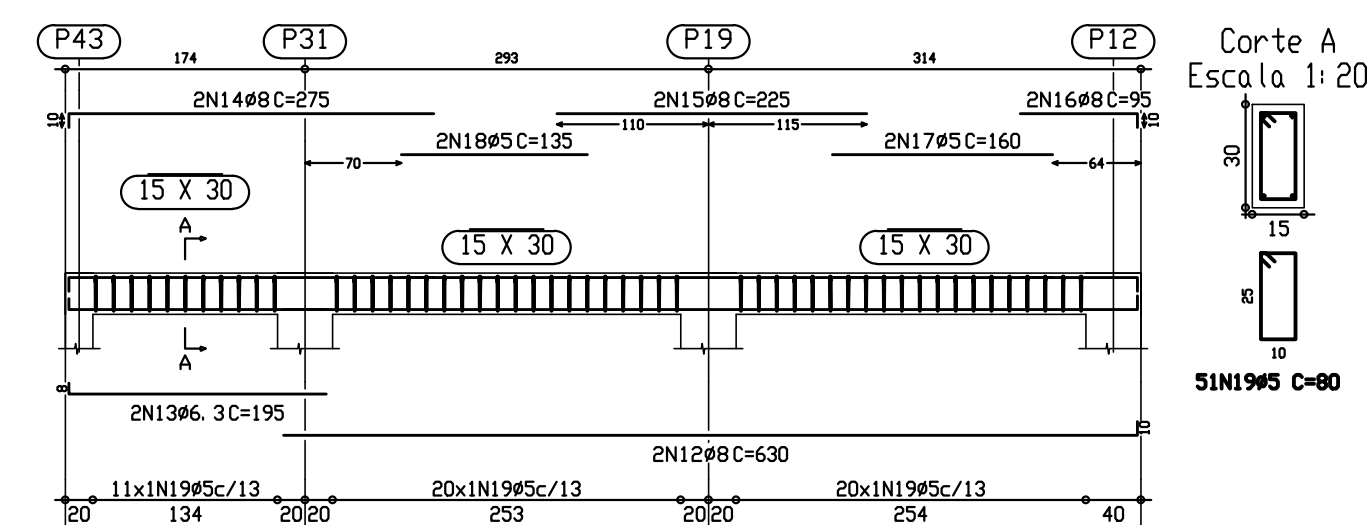
Pórtico 16
Escala 1:50



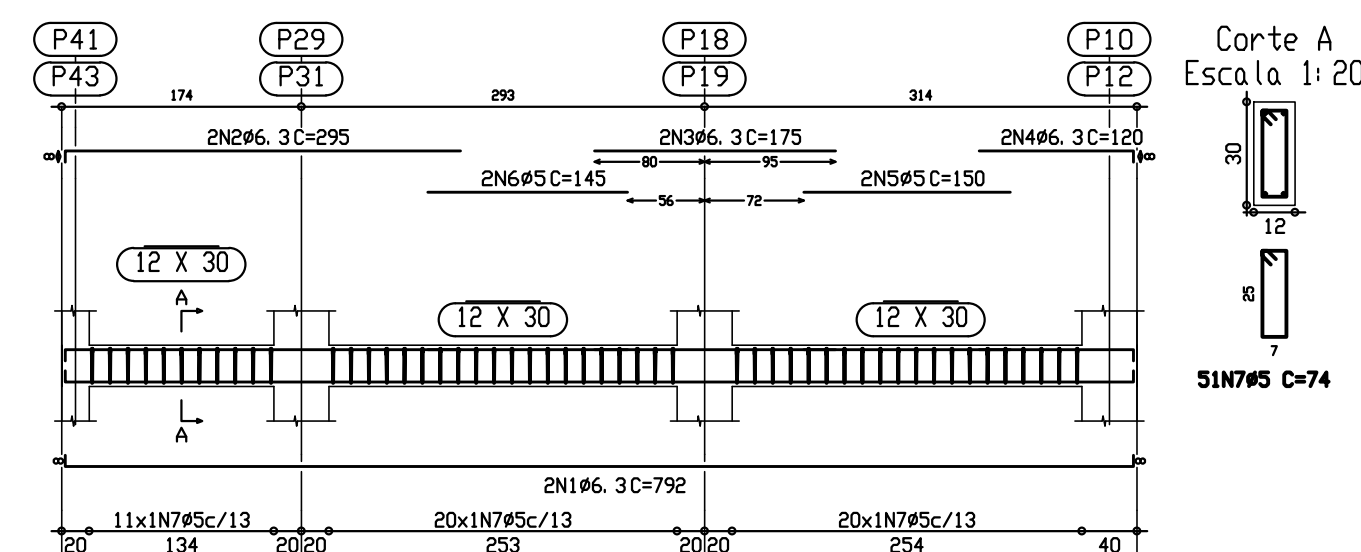
Elemento	Pos.	Dist. Q	P _{tot} (Ct)	P _{tot} (Ct)	Comp.	Total	50-Ala-60 (Ct)	(Kg)		
Particella I	1	#16	8	666	19	685	1330	21.5	0.9	
	2	#16	8	380	19	399	778	12.8	0.5	
	3	#63	8	142	10	150	300	4.8	0.2	
	4	#10	19	193	20	213	426	7.0	0.3	
	5	#8	19	156	15	175	350	5.7	0.2	
	6	#8	19	155	15	165	330	5.6	0.2	
	7	#8	19	155	15	165	330	5.6	0.2	
	8	#8	19	155	15	165	330	5.6	0.2	
	9	#5	13	142	10	150	300	4.8	0.2	
	10	#5	140	150	15	165	330	5.5	0.2	
	11	#5	395	395	70	765	1530	25.5	1.2	
							150	4300		6.6
Total(1016)							24.0	9.9		
Particella II	12	#8	8	620	10	630	1260	4.9	0.2	
	13	#8	8	187	10	195	390	0.5	0.0	
	14	#8	8	187	10	195	390	0.5	0.0	
	15	#63	8	230	270	500	1000	0.1	0.0	
	16	#8	10	230	270	500	1000	0.1	0.0	
	17	#8	10	230	270	500	1000	0.1	0.0	
	18	#10	17	175	175	350	700	0.2	0.0	
	19	#8	10	10	10	20	200	0.0	0.0	
	20	#5	15	155	15	170	340	0.5	0.0	
	21	#5	15	155	15	170	340	0.5	0.0	
	22	#5	15	155	15	170	340	0.5	0.0	
							125	270		0.4
							40	880		6.4
Total(1016)							13.9	8.0		
#5							0.0	0.0	17.9	
#63							3.9	0.0	0.0	
#8							16.2	0.0	0.0	
#10							4.0	0.0	0.0	
#16							23.7	0.0	0.0	
Total:							47.9	0.0	0.0	

Elemento	Pos.	Dian.	Q.	Pot (cm)	Recto (cm)	Comp (cm)	Total (cm)	CA-50-A (Kg)	CA-60 (Kg)
Partico 02	12	08	2	8	680	10	630	1260	
	13	06	3	8	187	15	195	390	1.0
	14	08	2	10	245	275	255	2.2	
	15	08	2		225		225	450	1.8
	16	08	2		225	10	95	190	0.7
	17	05	2		160		160		0.5
	18	05	2		135		135	270	0.4
	19	05	2				80	160	0.4
							Total=1020	11.7	2.0
							05	0.0	7.3
							06	3	1.0
							08	9.6	
							010		
							016		
							Total	11.7	8.0

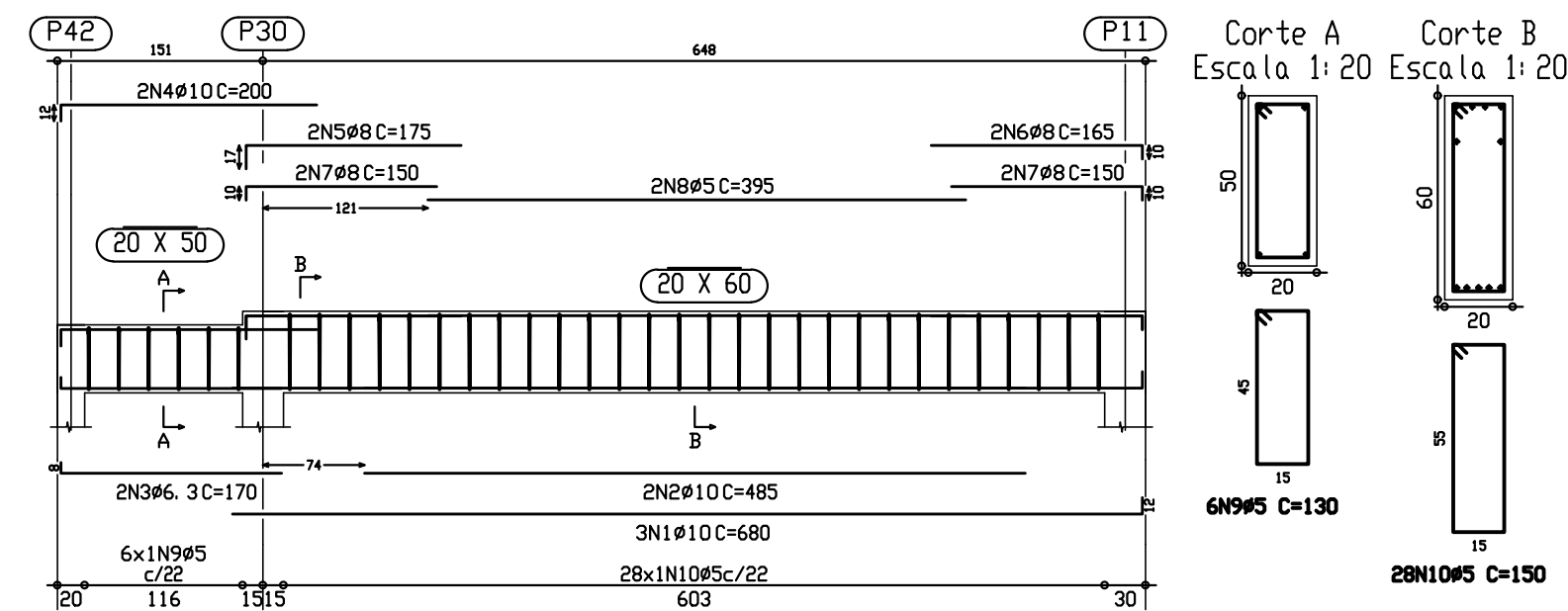
Pórtico 18
Escala 1:50

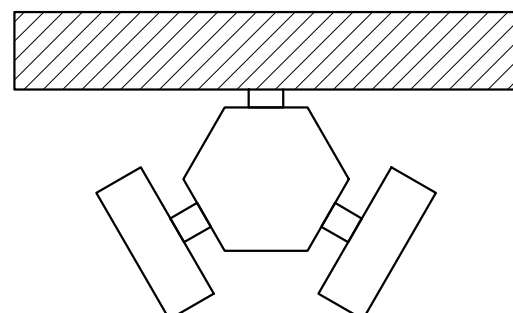


Pórtico 16
Pórtico 18
Escala 1:50

[illegible]

Pórtico 17
Escala 1:50

[illegible]

\\F00097-PC\BIBL\Arq\Proj\Arquit\c.cabral\Tedes\Arqs\ACAD\BR\PROJ\03\03.prt					
PROJETO ESPAÇO EDUCATIVO URBANO II – 04 E 06 SALAS DE AULA					
ENDEREÇO:		DIVERSOS			
PROPRIETÁRIO:		FUNDO DE FORTALECIMENTO PARA A ESCOLA – FUNDESCOLA			
AUTOR DO PROJETO :		MANOEL FERNANDO PEREIRA SANTOS			
RESPONSÁVEL TÉCNICO:					
<div><div>PROPRIETÁRIO</div><div>AUTOR DO PROJETO</div><div>AUTOR DO PROJETO</div><div>RESP. TÉCNICO</div></div>					
DLFO			CREA		
					
EST	PROJETO ESTRUTURAL				FOLHA 17 / 22
	BLOCO PEDAGÓGICO DETALHE DE VIGAS				
REVISÃO:	DATA :	ESCALA :	DESENHO :	VISTO:	
01—2006	ABRIL/2006				